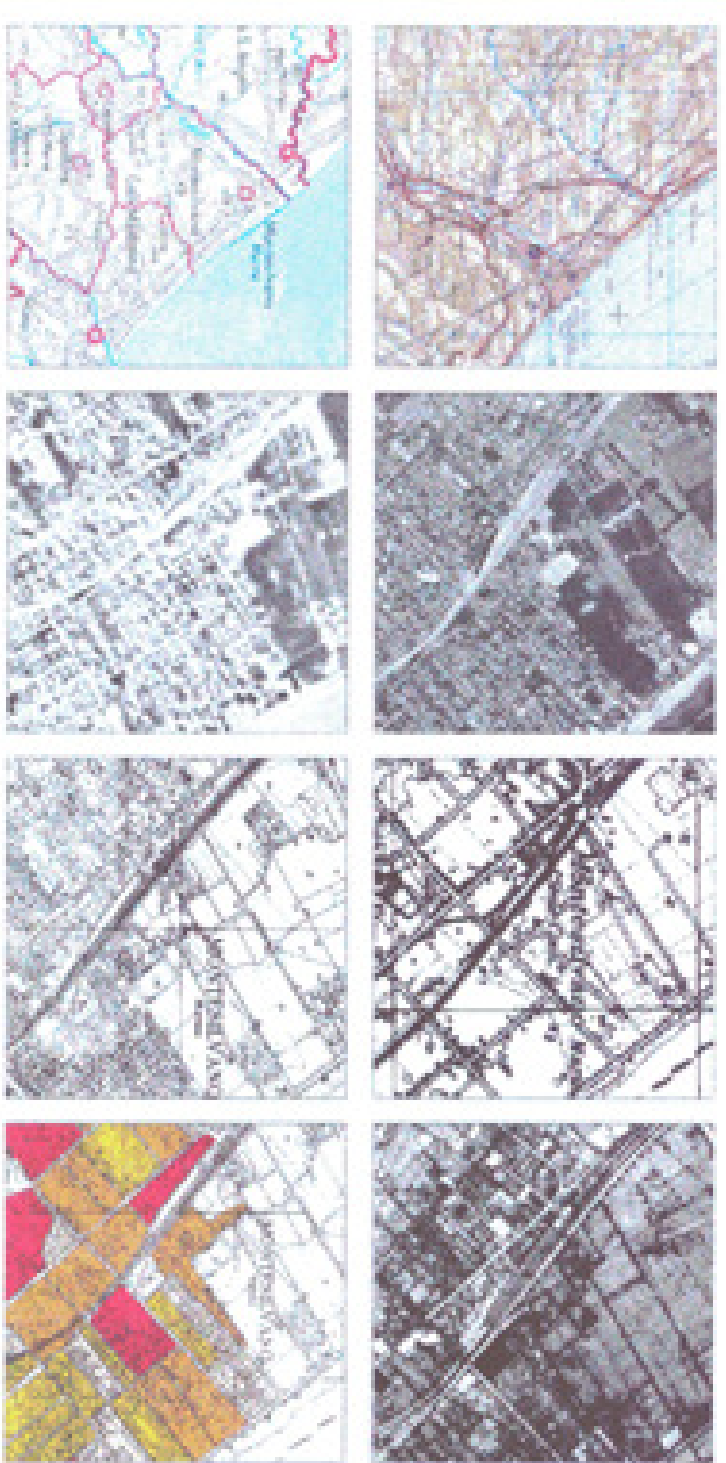




PIANO REGOLATORE GENERALE
**VARIANTE
GENERALE**





B3

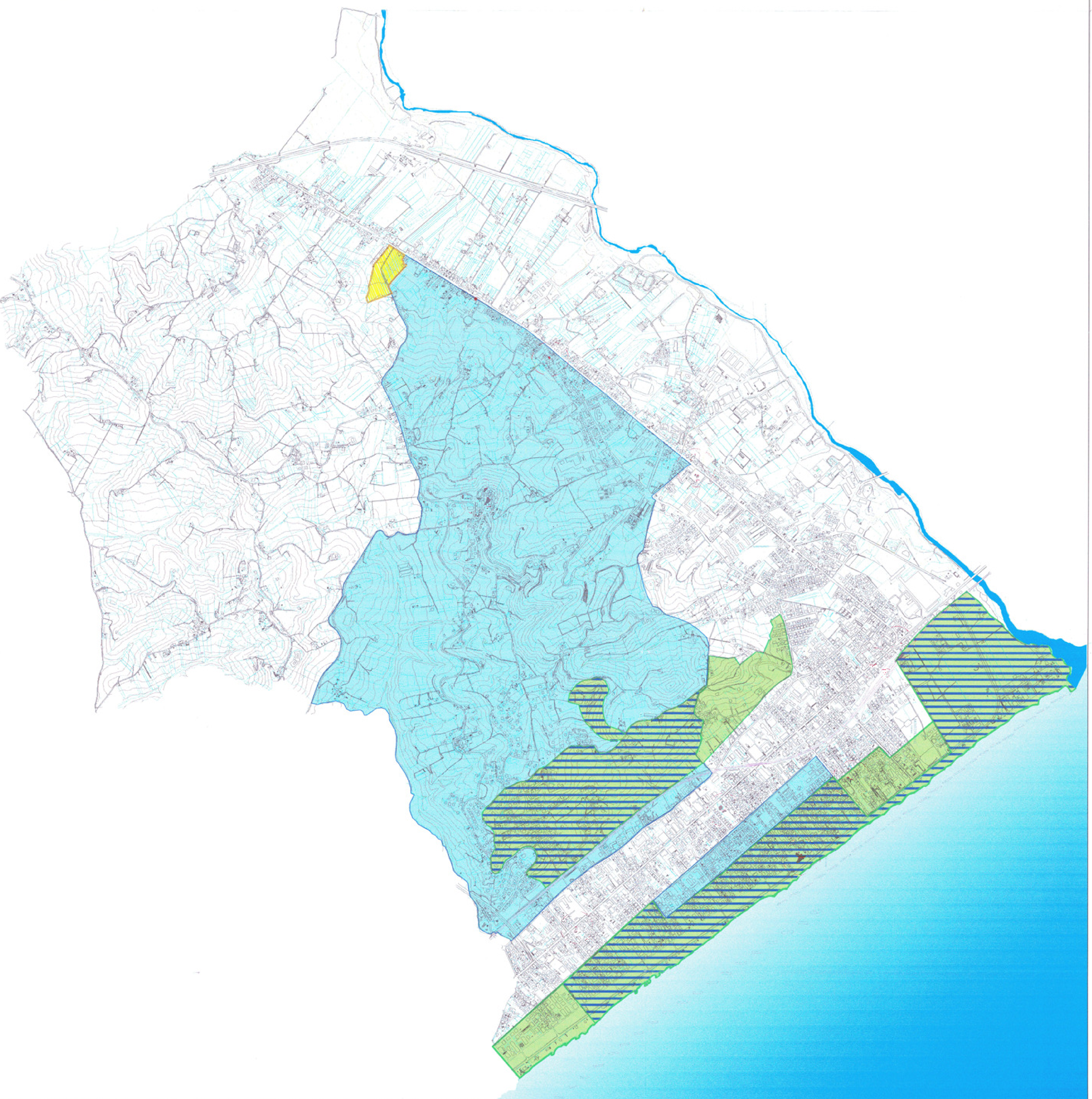
Vincoli esistenti sul territorio comunale

(R.D. 336723 e L.149739)

Progettista:
Avv. Roberto Scabi

LEGENDA

-  Vincolo idrogeologico R.D. n° 3267/1923
-  Vincolo paesaggistico L. n° 1497/1939
-  Vincolo idrogeologico e paesaggistico
-  Vincolo archeologico



Scala 1:10.000